

SONADA DEGREE COLLEGE LIBRARY

LIBRARY PROFILE: 2022

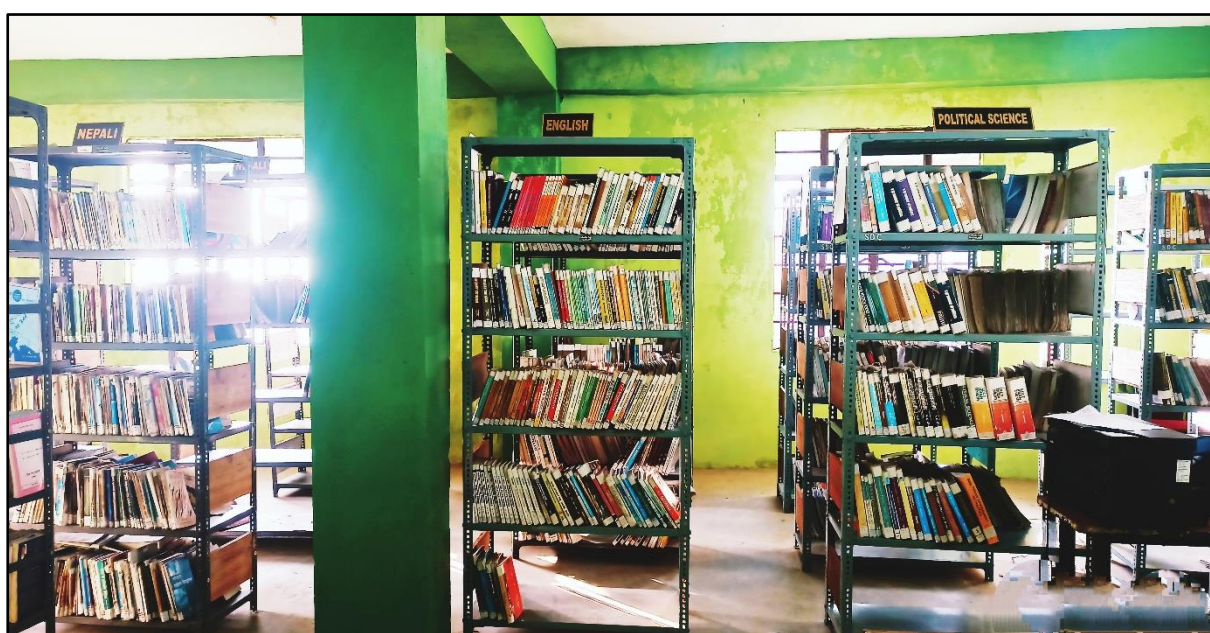
SONADA DEGREE COLLEGE LIBRARY

P.O. Sonada, Khashmal, Darjeeling- 734209

Email: sonadadegreecollegelibrary@gmail.com

<http://sonadadegreecollege.org.in>

Ph: +91 9434308442/+91 7584070023



Sonada Degree college is situated in Sonada, Darjeeling, less than 1 km from Sonada railway station. The college is a Co-Educational Degree College established in the year 1985. It is a Government established and Government Aided college receiving financial assistance from the government of west Bengal. The college has permanent affiliation with university of North Bengal, Raja Rammohanpur, P.O. North Bengal University. The university Grants commission (UGC), Govt. of India, New Delhi has enlisted the college under section 2 (f) and 12 (B) of UGC Act 1956.

The Sonada Degree College library was established just after the establishment of college in 1985. It is named as Maya Devi Chhetri library. After the classrooms, library is the nerve center of the college as most of the students belong to the BPL category and come from tea gardens, most of which are closed. Besides it seeks to promote reading habits among the students. Digitization and upgradation of library is the main goal of the library.

LOCATION

The library building is situated adjacent to Nepali classroom space. It is a separate building that entitles a peaceful environment for the readers.

LIBRARY STAFF

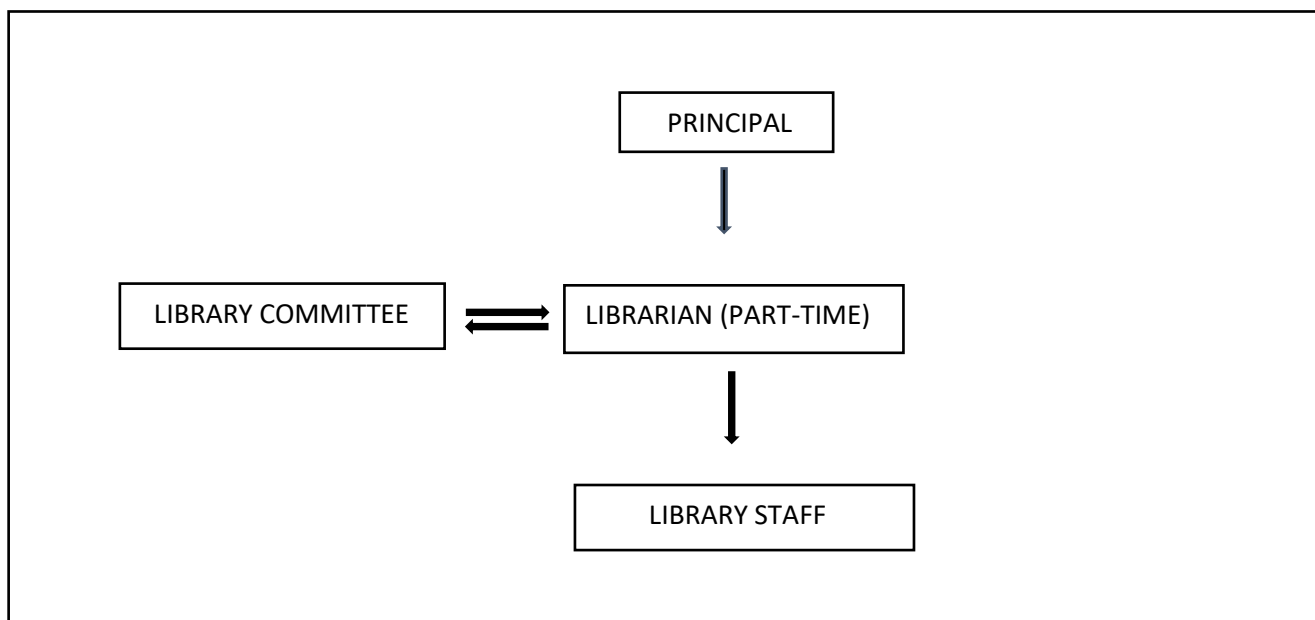
1. Miss Anushia Sharma (Librarian, Part-time) BLIS, MLIS.
2. Mr. O.P. Rai (Library Staff).

LIBRARY COMMITTEE

THE PRESENT LIBRARY COMMITTEE (2021-2022)

1.	Dr. Lalan P. Gupta	Principal	President
2.	Mr. Anil Kumar Biswakarma	Department of Nepali	coordinator
3.	Miss Anushia Sharma	Librarian (part-time)	Member
4.	Dr. Ragini Thapa	Department of Nepali	Member
5.	Mrs. Pemchula Bhutia	Department of Philosophy	Member
6.	Mrs. Anupama Tamang	Department of Political Science	Member
7.	Miss Laden Sherpa	Department of English	Member
8.	Mr. Abu Bakkar	Department of Education	Member
9.	Mrs. Illora Sharma	Department of History	Member
10.	Mr. O.P. Rai	Library Staff	Member

PRESENT ORGANISATIONAL STRUCTURE



SPACE AND ACCOMMODATION

The library has total area 1749Sq. ft. It has accommodation for at least 30 users, with special provision for the physically challenged.

LIBRARY SERVICE TO OUTSIDE USERS

Beside the college community, ex students (Alumni) and other potential users of the locality are allowed to use/refer the library books. Besides the college is open to any inquisitive learners with necessary permission from the principal. This is done as a part of community service.

LIBRARY AUTOMATION

Library Automation using Integrated Library Management Software (ILMS):

Sonada Degree College constantly strives for digitization and upgradation of its library infrastructure. Hence, Library Automation is conducted through KOHA and other similar mechanisms.

Nature of Automation (fully or partially): More than 150 books are entered among the current accession of 4373 books. These books are searchable through OPAC. The process of barcode and circulation through bar-code is in its process.

Version of Software: 19.05

Year of Automation: 12th December 2022 onwards.

E-RESOURCES AVAILABLE

1. N-LIST (in process): e-journals and e-books.
2. Shodhganga (freely available to all)

INFORMATION RETRIEVAL

Information retrieval is in process through OPAC of KOHA software.

NEWSPAPER SUBSCRIBED IN LIBRARY

1. Himalaya Darpan (Nepali)
2. The statesman (English)

OPEN ACCESS TO BOOKS

College Library has the facility of open Access System.

LIBRARY HOUR

The Library is open on all working days, from 9:00 am to 3:00 pm (Monday to Saturday).

CLASSIFICATION SCHEME FOLLOWED

Dewey Decimal Classification (DDC), 19th edition is followed for segregation and classification. DDC codes for main subject group are as follows:

000 to 099	Generalities
100 to 199	Philosophy and related disciplines
200 to 299	Religion
300 to 399	Social Science
400 to 499	Language
500 to 599	Pure Science
600 to 699	Technology (Applied Science)
700 to 799	The Arts. Fine and Decorative Arts
800 to 899	Literature
900 to 999	History and Geography

BEST PRACTICES IN LIBRARY SERVICE

- Open access and lending facility to students and staff members.
- Reference service.
- Reading room service.
- Books are available for carrier guidance and self-help.
- Library Orientation are done on yearly basis.
- Access to Internet for e-resources.
- Wi-fi service.
- Open access to books.
- Open access to journals.
- Outsiders are free to refer books as part of community outreach program.

COLLECTION DEVELOPMENT

- Books for competitive examinations (NET/SET)
- Important Reference books.
- Collection of Religious books.
- E-Resources and Internet resources
- Self-help e-books available.

FUTURE PLANS

- Environmental control in library.
- Digitization and preservation of rare books.
- Fully automation and circulation through Barcode.

Anushia Sharma,
Librarian (part-time)

